



THE POST

LAND CONSERVATION AWARDS CEREMONY

CTF's Fall Fundraiser and Awards Ceremony held on Sunday, November 13th, 2005 was a grand success! Over 150 guests attended the event at Savannah Grande Reception Hall and approximately \$25,000 was raised for CTF's programs.

At the event, CTF honored Freddie Wood and M.C. Davis, both landowners for their work in protecting their land for future generations with Land Conservation Awards. Larry D. Harris, Ph.D. was honored for his life-long contributions to conservation biology and landscape ecology with a Distinguished Conservationist Award. Renowned author and travel journalist Herbert L. Hiller was the keynote speaker and Gregg Jones, Santa Fe Community College Theater Director, served as auctioneer for a live art auction that auctioned off 27 pieces of original art from some of the finest local and regional artists.

CTF's Greenways Program was founded on the principles formulated by Dr. Harris' visionary research at the University of Florida, which focused on habitat fragmentation and wildlife corridors.

Dr. Katie Sieving, Wildlife Ecologist and CTF Secretary (past), introduced Dr. Harris. She highlighted many



Larry D. Harris, Ph.D. receives the 2005 Distinguished Conservationist Award at the event. CTF Secretary (past) Dr. Katie Sieving introduced Dr. Harris and CTF President (past) Terry Zinn presented the award. The print was donated by Stephen A. Malkoff and the Malkoff Gallery and is titled "William Bartram Oak." Photo by Ed Geers.

(continued on page 3)

EVINSTON TO CROSS CREEK PAINT OUT

For six magical days at the dizzying height of wildflower season, fifty of Florida's finest *plein air* landscape painters will converge in Evinston and Cross Creek to paint from dawn till dusk. A rare art marathon, the *Evinston to Cross Creek Paint Out* is free and open to the public and runs from April 7 – 15. The event culminates with the Gala

Collectors Sale of paintings produced at the event, April 14 and 15 at the Historic Thomas Center.

The event is co-sponsored by the Artists Alliance of North Florida (AAONF) and CTF to help raise funds for the Evinston Historic Preservation Project. A portion of all sales will benefit the Wood & Swink Old Store & Post

Office Renovation Fund, which will purchase an historic preservation easement to protect the building forever and carry out upgrades required by the Postal Service to maintain the post office in its current location. CTF is also searching for additional funds from the Florida Department of Transportation, the Division of Historical Resources and private foundations to raise the approximately \$200,000 needed.

(continued on page 4)

Letter from the President

Dear Members and Friends,

I want to welcome Katie Sieving as our new President of the Board. Katie has been a stellar board member and after a little arm twisting she agreed to run and was voted in at the annual meeting on January 25, 2006. Please welcome Katie to her new position and give her your support. The Board also welcomed two new Board members in 2005, John Hendrix and Bill Schlitzkus and we are looking forward to working with both of them.

CTF had a very successful year in 2005 due to a very hard working staff and Board. We had our most successful fundraiser ever in which we raised almost \$25,000. The generosity of local artists and business's and the generous gifts from Mickey Singer and Progress Energy led to great fund raiser. We look forward to an even better event in 2006.

We have undertaken substantial efforts to update our policies and procedures and have worked closely with the Land Trust Alliance to ensure we stay current with policies and procedures that guide CTF in its mission of protecting working rural lands.

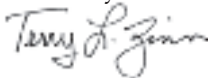
We are venturing onto new ground as we work with Marion County to protect a significant portion of horse country in Marion County. We look forward in 2006 to working with the horse industry and owners to help conserve the working horse farms of Marion County. We have received generous grants from the Quail Roost Foundation and Progress Energy to get the word out on the County's and our efforts to protect these important rural lands.

We are also looking forward to advancing the protection of the Evinston area in conjunction with Alachua County and the Artists Alliance of North Florida. The Evinston to Cross Creek Paint Out April 7 - 15 will help raise funds to help preserve the Wood & Swink Old Store and Post Office.

In 2005, CTF also partnered with Dr. Mark Hostetler, Associate Professor at the U.F. Department of Wildlife Ecology & Conservation and Producer of the *Living Green* TV series, an educational program for public television about conservation issues. CTF will be featured in a *Living Green* program about conservation easements. The program will be aired on WUFT TV (Channel 5) sometime this Spring.

We greatly appreciate the donations of time and money our members have made in 2005. We look forward to an ever expanding CTF in 2006.

Sincerely,



Terry L. Zinn, Past President of the Board

CTF has successfully protected approximately 2,700 acres of rural landscapes through publicly funded land conservation programs and conservation easements. CTF, in conjunction with the Office of Greenways & Trails, has also helped begin and facilitate the protection of a 153,000-acre project, the Camp Blanding to Osceola National Forest Ecological Greenway.

The Post is a publication of the Conservation Trust for Florida, Inc. a non-profit 501(c)(3) land trust.

BOARD of DIRECTORS

Dr. Katie Sieving, President

Associate Professor, Department of Wildlife Ecology & Conservation, UF

Nancy J. Peterson, Vice-President

Associate Director, School of Natural Resources and Environment, Research & Outreach/Extension, UF

Michael Campbell, Treasurer

Forester, Seedling Nursery Co-Owner

Terry L. Zinn, Esq., Secretary

Environmental Attorney, Florida Department of Transportation

David Carr

Conservationist, Pearl Country Store Owner

John Hendrix

Pecan Farmer, Ecologist, Environmental Consultant

David Pais

Pais Realty & Pais Landscapes/Agrosystems Owner

Hugh L. Popenoe

Rancher, Professor Emeritus Department of Soils and Water Sciences, UF

Bill Schlitzkus

Forester, Plum Creek Timber Company

ADVISORY BOARD

Fay Baird

Margy Bielling

Bob Buschbacher

Margaret "Peggy" Carr

Wayne Castello, Esq.

Will Ellis

Stephen Kattell

Dr. Gary K. Meffe

Chris Monaco

Steve Nesbitt

Francis E. "Jack" Putz

Tom Saunders

Frank Walters

Kathleen S. Williams

Freddie Wood

STAFF

Busy Shires Byerly, Executive Director

Dr. Tom Hoctor, Greenways Program

Research Scientist

Ellen Huntley, Farmlands Project Director

Carol M. Gordon, Program Assistant

Conservation Trust for Florida, Inc.

P.O. Box 134, Micanopy, FL 32667

Phone & Fax: 352-466-1178

www.conserveflorida.org

info@conserveflorida.org

of his accomplishments, but focused on the impact his “Vision” maps and his book, *The Fragmented Forest: Island Biogeography Theory and the Preservation of Biotic Diversity* had on the conservation community. *The Fragmented Forest* was first published in 1984, and in 1986, Dr. Sieving was a Ph.D. student working in the Panamanian tropical forest.

“My advisor, Jim Karr from the University of Illinois was raving about the promise of a new ecological discipline that he had been involved in crafting called Landscape Ecology. I asked him what it was all about, and he said read *The Fragmented Forest* by Larry Harris,” Dr. Sieving said.

The book integrated the “concepts of ecological connectivity - core protected areas interconnected with wildlife corridors and landscapes rich with healthy ecosystems and healthy human communities and productive working lands - with careful clarity and wisdom,” she added.

In 1991, Dr. Sieving was an assistant professor at California State University, teaching CSU’s first graduate course in Conservation Biology.

“In my class, there were mature students who worked for the U.S. Forest Service, state wildlife agencies, The Nature Conservancy, and private ecological consulting companies,” she said. “And they were on fire about *The Fragmented Forest*; the book spoke truth to young professionals caught in the crossfire at public agencies trying to serve the needs of a swelling human population and of shrinking natural resources. Larry’s book spoke to this handful of conservationists in California and across the country at that time.”



Freddie Wood and his wife Wilma Sue Wood at the Fall Fundraiser and Awards Ceremony. Freddie received a Land Conservation Award for his efforts to protect his family’s historic 173-acre farm in Evinston. Photo by Ed Geers.

(continued on page 4)

A SPECIAL *Thank you* TO OUR GENEROUS EVENT SPONSORS

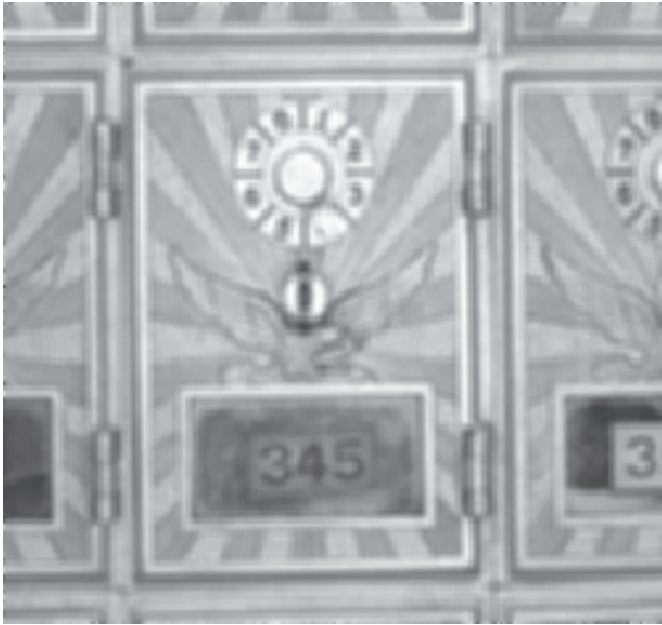
Legacy Sponsor MICKEY SINGER

Benefactor Sponsor  **Progress Energy**

Founder Sponsors David and Peggy Carr; Central Florida Office Plus; David Pais; Nancy J. Peterson and Gerald Culen; Savannah Grande Reception Hall; and Terry L. Zinn

Patron Sponsors Alta, Inc.; Atlantic Design & Construction (table decorations); Cox Communications; Gainesville Health and Fitness Center; GRUgreen Energy; Stephen A. Malkoff, Malkoff Gallery (award for Dr. Harris); and VisitGainesville.com

Sustaining Sponsors Campus USA Credit Union; Ron Chandler and Mimi Moreno; Elizabeth P. Davies, CPA; Garden Gate Nursery; Goodwin Lumber Company (awards for Mr. Wood and Mr. Davis); Greathouse Butterfly Farm, Inc.; Hoch and Celeste Shitama; Helen Warren, Realtor with ERA Trend Realty; and Xerographic Copy Center



The Wood and Swink Post Office still uses the original boxes. These boxes are an addition to the originals. Photo by Stewart J. Thomas.

(continued from page 1) Evinston to Cross Creek Paint Out

Little changed since 1882, the Wood & Swink Old Store and Post Office is Florida's oldest working post office, and one of the last working general store post offices in the na-

tion. It still features its old wood stove, brass mailboxes and wooden shelves. In it, visitors can purchase home-canned jars of peppers, fresh yellow squash, or mail a registered parcel.

The Wood and Swink has been in the Wood family since 1906 and a member of the Wood family has served as the postmaster since 1913. However, Wilma Sue

Wood plans to retire soon, after 28 years of service as the Postmaster and the fate of the post office is a concern for the entire community.

Due to a lack of modern conveniences - the woodstove and ceiling fans are authentic, but not the work-

ing conditions most people desire — there's concern that the next postmaster would not be willing or able to work under those conditions and that the Postal Service would retire Zip Code 32633 or move the Post Office to another building.

The Postal Service sent a letter stating they do not intend to close the Post Office, but the upgrades and preservation are still necessary. Although listed on the National Register of Historic Places, this does not provide permanent protection for the Wood and Swink, but the historic preservation easement will protect the building forever.

Alan McKellips of Hunter McKellips Associates Architects is providing the design work and architectural services free of charge. Restoration and upgrades include installing a central heat and air conditioning system, a handicap ramp, two new restrooms, a glass "alcove" to enclose the solid double-hung wood doors and restoring the wood plank floors and

(continued on page 6)

(continued from page 3) Land Conservation Awards Ceremony

Vision maps like Larry's 1985 reserve network system connecting the Okefenokee to the Withlacootchie helped spur decades of mapping; maps exist for many regions now, including the Appalachian reserve networks and the Rocky Mountain reserve networks - even the Los Angeles Basin has a published reserve network.

"Dr. Harris and other conservationists envisioned a re-connected Florida landscape as part of a statewide wildlife conservation plan, involving corridors for conservation - as in his book, maps were made, and the patient very human philosophy of long-term, large scale conservation was established," she said.

Alachua County landowner and author Freddie Wood, who is a fifth generation farmer, was recognized for his efforts to protect his family's historic 173-acre farm in Evinston. The farm has been in the family since the early 1880's and the town of Evinston was named after Mr. Wood's great grandfather, Captain William Drayton Evins, hence the name Evinston. The farm has also been designated a Century Pioneer Family Farm by the Florida Agricultural Museum because the farm has been in the Wood family for over 100 years.

CTF Board Member David Carr introduced Freddie and commended him on his conservation ethic and said he hoped that the negotiations with Alachua County to purchase a conservation easement on the farm will work out for the best. CTF nominated Freddie's farm to the Alachua County Forever (ACF) program, but the easement has not been completed. ACF staff and Freddie hope to finalize the easement in 2006.

Freddie wrote about the reason he is working to protect his land, "Maybe it is wrong to love land, but I always have loved our farm; so peaceful to get away from the rest of the world and go talk to the cattle and look at the wildlife. Most any time on the property, there are eagles, sandhill cranes, or hawks," wrote Freddie.

(continued on page 5)



M.C. Davis was honored with a Land Conservation Award at the Fall Fund Fundraiser and Awards Ceremony. Photo courtesy of M.C.

(continued from page 4) Land Conservation Awards Ceremony

“Many other species can also be seen. I would so much love to see our little part of the world saved from the bulldozers and the concrete and left as is for my children and grand children to walk on and love it as I have,” Freddie also wrote.

Freddie is an accomplished author and has recently updated his self-published 1992 book titled *Evinston...Home - God's Country - An Historical Account of Evinston, Florida*. Additional books include *Gardening in North Central Florida, My Way* and *Wood - Evins* an historical account of his family.

M.C. Davis was honored with a Land Conservation award for his dedication to land conservation by protecting large tracts of land to help connect greenways and wildlife corridors.

(continued on page 7)

THANK YOU TO OUR SILENT AUCTION DONORS AND VOLUNTEERS

Silent Auction Donors

A Moment in Time, Inc.
A Plant & Garden Expo Center
Jim Aikin
Angel Gardens
Richard Beardsley
Blue Highway, A Pizzeria
Dawn Bone, LMT
Brasington's Adventure Outfitters
Stacey Breheny
Rob Brinkman and Carol M. Gordon
Iris Burke
Michael and Sandy Campbell
David and Peggy Carr
Chiappini Native Farm Nursery
Jacquelyn Collett
Crescent Silver Sands
Delectable Collectables

Dragonfly Sushi & Sake Company
Earth Pets
E'lan Hair
Emiliano's Café
Katy Fisher
Frame Factory
Edwin Geers
Grady House Bed & Breakfast
Grandiflora
Carl Hanover
Harmony Gardens
Harvest Thyme Café
Hippodrome State Theater
Mara Uman Hixon
Ilene's for Fashion
Elsa Kula
Leonardo's 706
Magnolia Plantation Inn Bed & Breakfast
Media Image Photos
Mildred's Big City Food

Jane Morris - Portraits
Stephen Nesbitt
Paramount Grill
Patagonia
Linda Pollini
San Felasco Nurseries
Santa Fe Canoe Outpost
Satchel's Pizza
Virginia Seacrist
Shady Oak Stained Glass Studio & Gallery
Bruce Smart
Stonyfield Farm
The Strand Salon & Day Spa
Thornebrook Gallery
Tishart
Kate Turner
Ana Varela
Kathleen S. Williams
Wine & Cheese Gallery
Terry L. Zinn

Door Prizes
Gainesville Health & Fitness Center

Volunteers

Sharon Bauer
Peggy Carr
Jane Morris
Liz Pooley
Virginia Seacrist
Celeste Shitama
Jennifer Springfield
Kathleen S. Williams

Monica Leaden Cooper & Jack Nettles

Music

Gregg Jones

Auctioneer

CTF Development and Outreach Committee:

David Pais, Chair,
David Carr, and
Nancy J. Peterson

protecting HORSE COUNTRY update



Photo by Kerry Heubeck.

CTF is finalizing the protecting HORSE COUNTRY brochure and will soon mail the 12-page full-color brochure that explains and provides examples of land conservation options such as conservation easements and the Farm Bill programs to all the horse farm owners in Marion County along with a letter inviting landowners to a workshop on Tuesday, April 4th from 5:30-7:30p.m. at the Golden Hills Golf and Turf Club in Ocala.

The workshop will provide information about the tax benefits of conservation easements and explain Marion County's Farmland Preservation and Transfer of Development Rights (TDR) Program.

(continued on page 11)

(continued from page 4) Evinston to Cross Creek Paint Out windows. Funds from the purchase of the historic preservation easement will be placed in an interest bearing account to pay for the yearly insurance costs estimated to be \$6,200.

For Evinston, the post office is central to the community's identity. For Alachua County and North Florida, it is an important time to connect the dots between conservation, cultural arts, tourism, economic development, and education.

The Orange, Lochloosa and Newnan's "triangle of lakes" is rich in ecological, historical, and cultural diversity. The winter migration of sandhill cranes to the lakes' shores is a treasured event as the bird's calls signal their return. In the Evinston and Cross Creek area, some 48,500 acres are now protected as public land or with conservation easements, boasting one of the largest bald eagle populations in Florida.

Conservation of the natural and cultural heritage of Alachua County brings aware visitors who seek out the opportunities offered by a region that preserves quality of life and

that offers unique recreational, cultural, and nature-based experiences.

What is known as 'asset-based tourism' is on the rise nationally. Anne Pope of the Appalachian Regional Commission notes, "this type of tourism encourages the preservation of a site's unique sense of place and strengthens its prospects for long term sustainability." The National Geographic Society coined "geotourism" to describe travel in regions smart enough to parlay rural treasures into a strong economic development engine.

With strong conservation efforts and a plenitude of cultural and ecological groups, Alachua County is poised to position itself as the central destination hub for a region rich in natural and cultural treasures.

The AAONF's Florida's Eden Plan is working closely with organizations and businesses to showcase and connect the assets of North Florida through scenic routes that will allow visitors to appreciate the unique qualities of our region.

Portraying our sense of place begins with learning and loving who we are in Alachua County. ♪

Article by Annie W. Pais

HELP SAVE FLORIDA'S OLDEST WORKING POST OFFICE

- April 7 - 12 in Evinston and Cross Creek
- April 14, 15 Gala Collector Sale, Thomas Center, Gainesville
- Contribute directly to the preservation fund.
- Become an event sponsor or advertiser.
- Have fun volunteering at the event.
- Attend this free event, bring the family, enjoy yourself, buy a painting and take home a memory to treasure forever.

Visit www.FloridasEden.org for more information.



Gary and Nancy Meffe at the Fall Fundraiser and Awards Ceremony. Gary is a former Executive Director of CTF and Nancy served as CTF's Treasurer and Secretary for several years. Gary continues to serve on the Advisory Board. Photo by Ed Geers.

(continued from page 5) Land Conservation Awards Ceremony

M.C. was not able to attend the event, but Dr. Daniel J. Smith, who has worked with M.C. on many of his land conservation projects accepted the award on his behalf.

Dr. Tom Hactor introduced Dr. Smith and he spoke about the tremendous contribution that M.C. has made towards connecting wildlife corridors and land conservation by purchasing large tracts of land using his own resources or by partnering with other conservationists such as Sam Shine.

Dr. Smith spoke about M.C. being an “accidental conservationist” because his introduction to land conservation was by accident. M.C. was at a conference in a large hotel, but he went to the wrong meeting room, which was hosting a workshop on bears. M.C. decided to stay and listen to the presentation on bears and from that moment on, he has been an avid conservationist for the past twelve years.

Nokuse Plantation is his biggest and probably the most important project. It is comprised of 53,000 acres, which form a critical section of the proposed Greenway Corridor that would connect Eglin Air Force Base, Black Water River State Park, and Conecuh National Forest, et al with the Apalachicola National Forest and Tate’s Hell State Forest.

Nokuse (pronounced “no-goose”) is the Creek Indian word for black bear and symbolizes the desire to restore

ecosystems that provide suitable habitat for large ranging animals such as bears.

In addition to Nokuse Plantation, M.C. has also been involved with a number of conservation projects all over the south, including Mallory Swamp in Lafayette County, FL and Glass Mountain in Dawson County, GA.

“For nature to have a reasonable chance of continuing to function as the source of all wealth and life for man and all other species, then our conservation planning and execution, when possible, must be on the landscape and ecosystem level. I believe this can be accomplished by drawing upon the skills of the entrepreneur, the power of the government and the passion of the individual all directed by the knowledge of science,” wrote M.C. about his land conservation philosophy.

Herb Hiller was the Keynote Speaker for the event. Dr. Linda Crider, a long-time friend of Herb’s and bicycle safety expert at the University of Florida, introduced him. Hiller’s work has appeared in *The Atlantic*, *National Geographic Traveler*, and the *Washington Post*, and his

(continued on page 9)

Herlong Mansion Bed & Breakfast



Located in quiet historic Micanopy, the Herlong is a 1910 Greek revival mansion with nine in house rooms with private bathrooms.

Specializing in weddings, banquets, and seminars (during mid-week) and luncheons. Banquet room with 60 - 70 seating capacity with warming kitchen and handicap bathroom facility.

Let us pamper you for your special event, get away, or business retreat.

*www.herlong.com
(352) 466-3322*

GREENWAYS PROGRAM - SAN PEDRO BAY TO SUWANNEE RIVER CORRIDOR and O2O

CTF has a new project for the Greenways Program – the San Pedro Bay to Suwannee River Corridor was added to the program in 2005.

The project is intended to complete a wildlife corridor of protected public and private lands from the Suwannee River to the large wilderness areas of San Pedro Bay. Part of the goal of this project is to protect a high priority area within the Florida Ecological Greenways Network, which is a landscape linkage between the Osceola National Forest and the large forest landscapes of the Big Bend coast.

The state currently manages significant conservation areas along the Suwannee River between Osceola National Forest and the San Pedro Bay-Suwannee River project area.

The project will help close a gap between Suwannee River conservation lands and the San Pedro Bay Florida Forever project and includes sandhills, pine plantations, and floodplain swamp in a corridor approximately 5 miles long. If protected, the project would help create a local network of public and private conservation lands of almost 100,000 acres.



Photo © Beach to Bay Website 2003

The project would protect various wildlife species including gopher tortoise, gopher frog, swallow-tailed kite, southeastern American kestrel, indigo snake, wading birds, and the Florida black bear. ☞

O2O update

CTF continues to seek funds to acquire land or conservation easements for the Camp Blanding to Osceola Greenway Project. In 2005,

CTF was awarded a matching grant from the Wildlife Forever program for \$5,000, but funds will not become available until land is acquired.

The Florida Wildlife Federation also supported the project in 2005 and has committed matching funds for the Wildlife Forever grant towards acquiring a portion of the corridor.

CTF has also formed a partnership with The Nature Conservancy. TNC plans to co-sponsor the re-submittal of the National Fish and Wildlife Foundation (NFWF) proposal in early 2006. Two of the large landowners in the project area have expressed a willingness to negotiate a sale price.

In December, CTF participated in the media event sponsored by the Florida Endangered Species Network and the Defenders of Wildlife to publicize the O2O project.

Members of the media were taken on a field trip to visit sites within the project area and Jeremy Dixon of the Florida Fish and Wildlife Conservation Commission and Dr. Tom Hoctor discussed the importance of the project to bears and other species. ☞

Senate Approves Expanding CE Deductions

On November 18, 2005 the US Senate passed a tax bill that included a significant expansion of the deductions available to landowners who donate a conservation easement (CE) to a land trust. The bill provides for extending the carry-forward period for tax deductions from 5 to 15 years and raising the cap on conservation deductions from 30 percent of a donor's income to 50 percent and to 100 percent for farmers and ranchers. The bill also includes a variety of changes in law affecting charities and charitable contributions. But this story is far from over. The House counterpart of this bill does not include the conservation incentive, and getting the House to accept the Senate provision will not be easy. *A final decision could be made soon and the Land Trust Alliance needs your help to influence the bill.*

Please consider writing a letter to U.S. House of Representatives Bill Thomas and Charles Rangel, both members of the Committee on Ways and Means to express your support of sections 307 and 320 of the Senate's tax reconciliation bill (S. 2020). For more information go to <http://www.lta.org/publicpolicy/ppc.htm>

(continued from page 7) Land Conservation Awards Ceremony

first book, *Guide to the Small & Historic Lodgings of Florida*, won an award for the best travel guidebook in America.

Herb led the revival of the Florida state bicycling movement for which he became a charter recipient of the Florida Governor's physical fitness honor awards. In the 1970s, he initiated the Caribbean Tourism Research Centre in Barbados, taught at Florida International University, and led the emergence of Florida's bed and breakfast movement.

Herb's current book, *Highway A1A: Florida at the Edge* calls for tourism to help quicken the emergence of year-round residential downtowns, as well as providing a "path-breaking" guidebook to the Sunshine State's Atlantic coast.

Guest of honor, Olympic Event Rider Darren Chiacchia was not able to attend the event. Darren was a member of the Bronze medal-winning 2004 United States Equestrian Team that competed

in the Athens Olympics and he won the Individual Gold Medal at the 2003 Pan American Championships. Darren operates Independence Farm, and divides the year between his training facilities in Ocala, FL and Springville, NY.

CTF Board Member David Pais was chair of the live auction, which had 27 pieces of original artwork by several of the region's finest artists, including members of the Artists Alliance of North Florida (AAONF). Gregg Jones, Santa Fe Community College Theater Director, served as the auctioneer. CTF has adopted AAONF's guidelines for art auctions, which gives the artist the opportunity to receive a portion of the wholesale value of the art as a result of the live auction. Artists can also donate up to 100% of the retail value of the piece to CTF which allows the artist to deduct that value from their income taxes. Before the guidelines were developed, artists could only deduct the value of the art materials such as paints, frames, or a canvas. For more information about the AAONF guidelines go to: www.FloridasEden.org.

Next year's event will be held in the fall and we are already in the preliminary planning stages. We hope to make the live auction bigger and better (and earlier in the program). ∞



Herb Hiller, award winning author was the keynote speaker at the Fall Fundraiser and Awards Ceremony. Photo by Ed Geers.

Thank you TO ALL THE ARTISTS THAT DONATED ART TO THE LIVE AUCTION

Kate Barnes
Allison LeBaron
Eleanor Blair
Linda Blondheim
Clyde Butcher
Peter Carolin
Virginia Chen

Sean Dowie
Bruce Fraleigh
Bruce and Christine Green
Harriett Huss
Lenny Kesl
Michael Kemp
Dimitri Kournoukiotis
John Moran

Annie Pais
Jeff Ripple
Shaun Sexton
Jean Tyson
Colquitt Tanner
Stewart Thomas
Susan Trammell

TDR Workshop at PIEC Conference

The Conservation Trust for Florida, the Public Interest Environmental Conference, the School of Natural Resources and Environment, and the Alachua Conservation Trust will present a pre-conference workshop on Transfer of Development Rights (TDR) and its applicability in Alachua County. The pre-conference workshop is being held in conjunction with the University of Florida Law School's Public Interest Environmental Conference on Thursday, March 9, 2006 from 1 to 5 p.m. at the Reitz Union.

The workshop will develop action steps to best use TDRs, Clustering and the Rural Land Stewardship Program. It will present the advantages and disadvantages of TDRs with a focus on beginning the discussion about implementing TDRs in Alachua County. It will also focus on recent success stories and provide examples. We hope to generate relevant discussion about implementing TDRs and Rural Land Stewardship Programs through a question and answer session with panel members and with break out groups for attendees.

U.F. Law Professor, Jim Nicholas, has been confirmed as a panel member. The other panel members have not been confirmed, but representatives from Alachua County, Marion County (who just began implementing their TDR program), a large landowner in Alachua County, and a local developer (both of whom could benefit from such a program), have been invited to participate. ☞



The 12th Annual Public Interest Environmental Conference

TDR WORKSHOP

THURSDAY
MARCH 9th 1 – 5 PM

ROOM 283 at the
REITZ UNION



The Alachua County Commission renamed CR 225 the "Henry Deaver Wood Memorial Road" after Freddie Wood's grandfather, who was a four-time County Commissioner and who served as the postmaster of the Evinston Post Office (at the Wood & Swink) from 1913 to 1929. L to R: Harry Clark Wood, Freddie's brother; James W. "Billy" Wood, Freddie's cousin; and Freddie. Photo by Busy Shires Byerly.

Evinston/Orange Lake Historic Preservation Project *grant received from FRPP*

CTF is working with several landowners to protect the scenic countryside in the Evinston and Cross Creek area, which is an important, historic agricultural area for Alachua County. In the past, many of the fields had groves of orange trees, but now they are mostly used for cattle grazing and growing timber. It also provides valuable habitat for many listed species such as bald eagles, sandhill cranes, wood storks, and fox squirrels that make their home on the shore of Orange Lake.

Fifth generation farmer and author Freddie Wood has been working with CTF and the Alachua County Forever (ACF) program to protect his 173-acre farm with a conservation easement. Freddie is currently negoti-

ating with ACF to sell an easement on his farm to protect it forever. Funds to purchase the easement are from the ACF program and the USDA Farm Bill/Farm and Ranchland Protection Program (FRPP). CTF and ACF applied for a 50% matching grant from the FRPP program to match the ACF funds. The grant was awarded to Alachua County in September 2005.

Freddie and ACF staff are still negotiating the easement and working on getting the easement appraised. If Freddie agrees to the terms of the easement, then the Board of County Commissioners will vote to approve the purchase of the easement.

In September, CTF also held a meeting for residents in the Cross Creek area to inform them about the efforts to protect the area. Steve Nesbitt, ornithologist with the Florida Fish and Wildlife Commission provided information about the bald eagles and Brian Block of The Nature Conservancy answered questions about the ACF program. ☞

(continued from page 6) protecting HORSE COUNTRY update

CTF is also working on a partnership with Marion County to participate in and promote the Marion County Transfer of Development Rights (TDR) Program.

TDRs help protect land while preserving landowner property rights and protecting farms and rural landscapes.

The TDR program is basically a trading game and realty transfer. It creates “sending areas” where new development is not desired, and “receiving areas” where denser development is appropriate and landowners receive cash from selling TDRs or (potentially) a tax-deduction for donating TDRs. Landowners in the sending area and enrolled in the Marion County TDR Program own and manage their property and pay property taxes after transferring development rights. The property will have no future development potential when the development rights are transferred.

Landowners in the sending area can 1) sell their TDRs directly to a landowner in the receiving area or 2) use the TDRs in the receiving area if they also own property in the receiving area. CTF is determining the mechanism for the sending landowner to receive a federal tax deduction for a TDR donation to CTF. CTF would then sell the TDRs to a landowner in the receiving area and the proceeds would be used to conserve more farmland in Marion County.

The TDR program can be a win-win situation: sensitive conservation and agricultural lands are preserved at no cost to the public, and property owners realize some of the economic value of their land. Farmers and homeowners who accept increased density in their area – the receiving area, and developers who purchase the development rights make the TDR program work and maintain the quality of life in North Central Florida.

In addition to the TDR program, the Marion County Comprehensive Plan has other provisions for preserving the county’s rural character. It establishes a Rural Preservation land-use classification, which provides for “...agricultural and/or agricultural-related uses, which preserve the character of rural lands,” and limits development activities within such lands. The Comprehensive Plan has also designated most of the northwest quadrant of Marion County as the Farmland Preservation Area, and established it as a sending area for the TDR program.

The TDR receiving areas more or less include all unincorporated areas with a land use designation of Urban Reserve which lie within the following boundaries: the north-

erly boundary being located just south of CR 326, the southernly boundary being SR 40, the easterly boundary being NE 25th Ave., and the westerly boundary being a portion of NW 100th Ave. Road and just south of NW 90th Ave. ☞

Thank you to the Quail Roost Foundation, founded in honor of Elmer and Harriet Heubeck, which generously contributed an additional \$5,000 to support the outreach efforts of the HORSE COUNTRY project.



Photo by Kerry Heubeck.

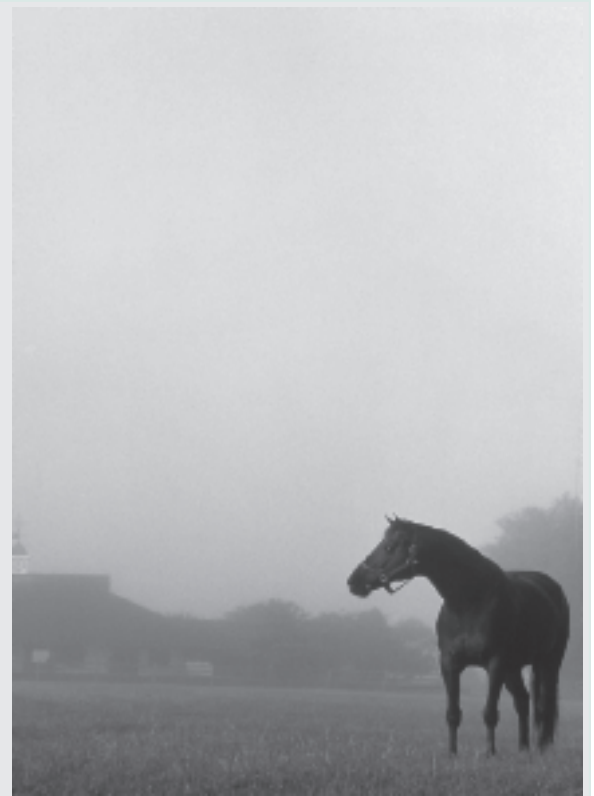


Photo by Kerry Heubeck.

Marion County Citizens’ Coalition, a 501(C)(3) non-profit corporation, whose mission is to educate the citizens of Marion County about our land and water, provided information for this story.



Conservation Trust for Florida, Inc.
 P.O. Box 134
 Micanopy, FL 32667
 Phone & Fax: 352-466-1178
 www.conserveflorida.org
 info@conserveflorida.org

NONPROFIT ORG
 U.S. POSTAGE
PAID
 GAINESVILLE FL
 PERMIT NO 702

Address Service Requested

The mission of the Conservation Trust for Florida is to protect the rural landscapes of Florida. We focus on farms, ranches, working forests, and natural areas that provide landscape connections.

**Florida loses 150,000 acres of rural land to development every year.
 Your support will help CTF work to slow this trend.**

EVINSTON TO CROSS CREEK PAINT OUT: April 7 - 15: Please help make this event a success! If you would like to volunteer your time for this event, please contact CTF at 466-1178 or AAONF at 377-0777.

KANAPAHA SPRING GARDEN FESTIVAL: MARCH 25 and 26: CTF will have a booth this year. If you would like to volunteer, please contact us. Have fun selling native wildflower seeds and get a free Volunteer parking pass!

MEMBERSHIP FORM

YES! I support the goals of the Conservation Trust for Florida and enclose my tax-deductible membership dues of:

- \$15 Student
- \$25 Individual
- \$40 Family
- \$100 Sustaining
- \$250 Patron
- \$500 Founder
- \$1,000 Benefactor

I have time and talents to contribute as well. Please contact me!

I am a landowner and would like information about conservation easements.

NAME(S): _____

ADDRESS: _____

PHONE: _____

E-MAIL: _____

ART BENEFITS CTF

☞ Artist Susan Trammell will generously donate \$250 of the proceeds from the sale of the framed original water color titled *Flame Azalea - Rhododendron austrinum* to CTF. On display at Harvest Thyme Café on Main Street in Gainesville. (12" x 16" Price \$500.) Photo at www.conserveflorida.org

☞ Susan will donate all of the proceeds of the framed photograph giclee titled *Chain Fern - Woodwardia virginica* to CTF. On display at the Pearl Country Store in Micanopy. (10.5" x 13.5" Price \$50)

*Thank you
 to all our supporters, members, and friends
 for a successful 2005!*